



SERVICES PROVIDED TO ALL REGIONAL OFFICES THROUGHOUT THE PROVINCE

■ REGIONAL SUPPORT

Provides technical support to ARO, Central, Marystown, Western and Labrador

■ ASSET MANAGEMENT

Building condition reports and database management

■ TECHNICAL INVESTIGATION AND REPORTING

■ PLANNING AND BUDGETING

Cost estimating and budgeting

■ DESIGN, PUBLIC TENDERING, AND PROJECT MANAGEMENT

■ ENVIRONMENTAL MANAGEMENT

MODERNIZATION AND IMPROVEMENT (M&I)

The Engineering Department's key service is to support the M&I process.

Engineering compiles a Master list of all projects referred to Engineering, which are then reviewed by managers, assigned to technicians and prioritized according to certain factors, including:

- Regional priorities, coordination with own forces
- Location (i.e. Labrador), weather factor considerations
- Resources; budgeting, repeat projects, tenant relocations
- Strategic tendering, marketplace conditions
- Environmental conditions, health and safety

ENGINEERING'S DESIGN AND CONSTRUCTION

Objective is to construct buildings which are:

- Healthy and safe
- Cost effective
- Low maintenance
- Adhere to codes, standards and other legislation
- Energy efficient
- Meets the needs of clients with special needs

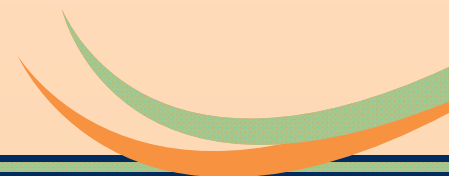
Projects may include:

- Renovation
- Redevelopment/regeneration
- Building Demolition
- New Construction
- Siteworks

OUTSOURCED SERVICES

Some services are outsourced by the Engineering Department. These include:

- Selected mechanical and electrical design
- Selected environmental services
- Structural design
- Selected architectural services
- Large scale civil engineering projects



LIST OF REPRESENTATIVE PROJECTS

New Construction:

- 4 units, Vickers Avenue, St. John's
- 6 units, Empire Avenue West, St. John's
- 6 units, Wyoming Drive, Stephenville

Major Renovation:

- Barachois Street, St. John's
- Prospero Place, St. John's
- Watson Street, St. John's
- Spruce Avenue, Mount Pearl
- Greenwood Crescent, Mount Pearl

Redevelopment/Regeneration:

- Cashin/Froude Avenue area, St. John's
- Empire/Hoyles Avenue area, St. John's
- Perrault Place, Goose Bay
- Crestview, Corner Brook

Siteworks:

- Froude Avenue Parking Lot

Electrical Upgrading:

- Ckaulker Place, St. John's
- Buckmaster's Circle, St. John's

DEPARTMENT POSITIONS

- Team Leader
- Clerical
- Project Managers
- Environmental Manager
- Engineering Technicians
- Draftspersons



Housing

Team Leader: Colleen O'Keefe
ccokeefe@nlhc.nl.ca

1st Floor, Sir Brian Dunfield Building
P.O. Box 220, 2 Canada Drive
St. John's, NL A1C 5J2

(709) 724-3158

February 2011

ENGINEERING

NL Housing's Technical Consultant,
Supporting Regional Office Operations
and Head Office Departments



Housing